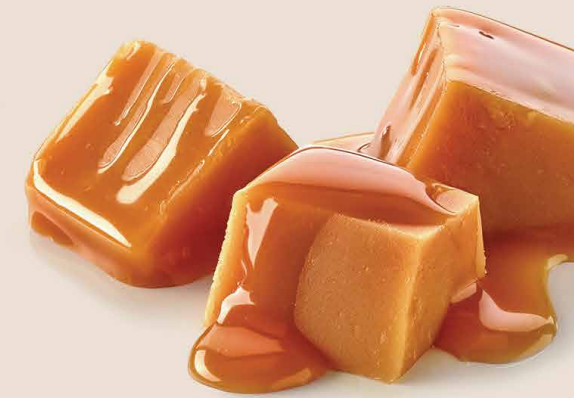




Healthy
Food
Supplements

The logo consists of a green circle with the letters 'HFS' in white, positioned to the right of the text 'Healthy Food Supplements'.

TECHNICAL SPECIFICATION FOR PRIVATE LABELS



1.2.2023





MOQs products of every flavour: 5 000 pcs (50-80g)
8 000 pcs (30-40g)



MOQs foil of one kind: 50 kg



Foil lead time:
up to 6*/3** weeks from design approval

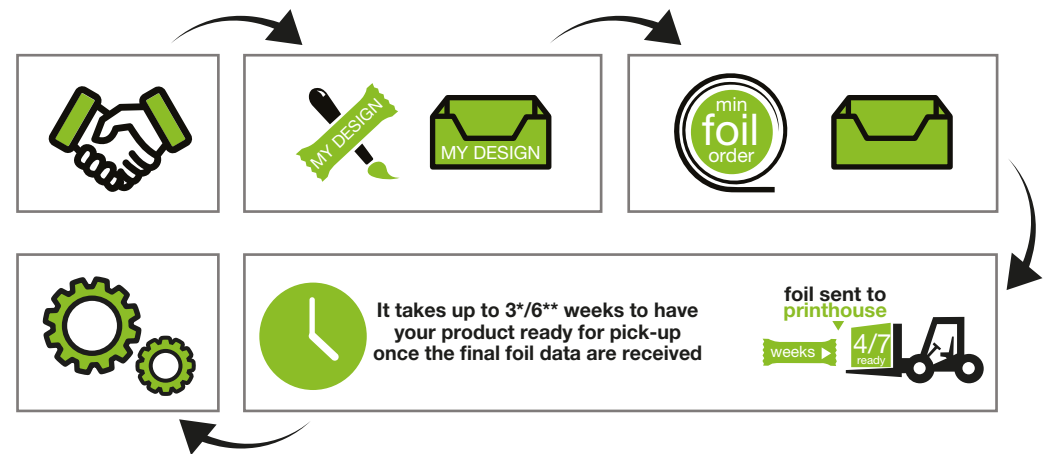


Foil consumption:
approx. 1g/1pc



overproduction/underproduction
must be tolerated

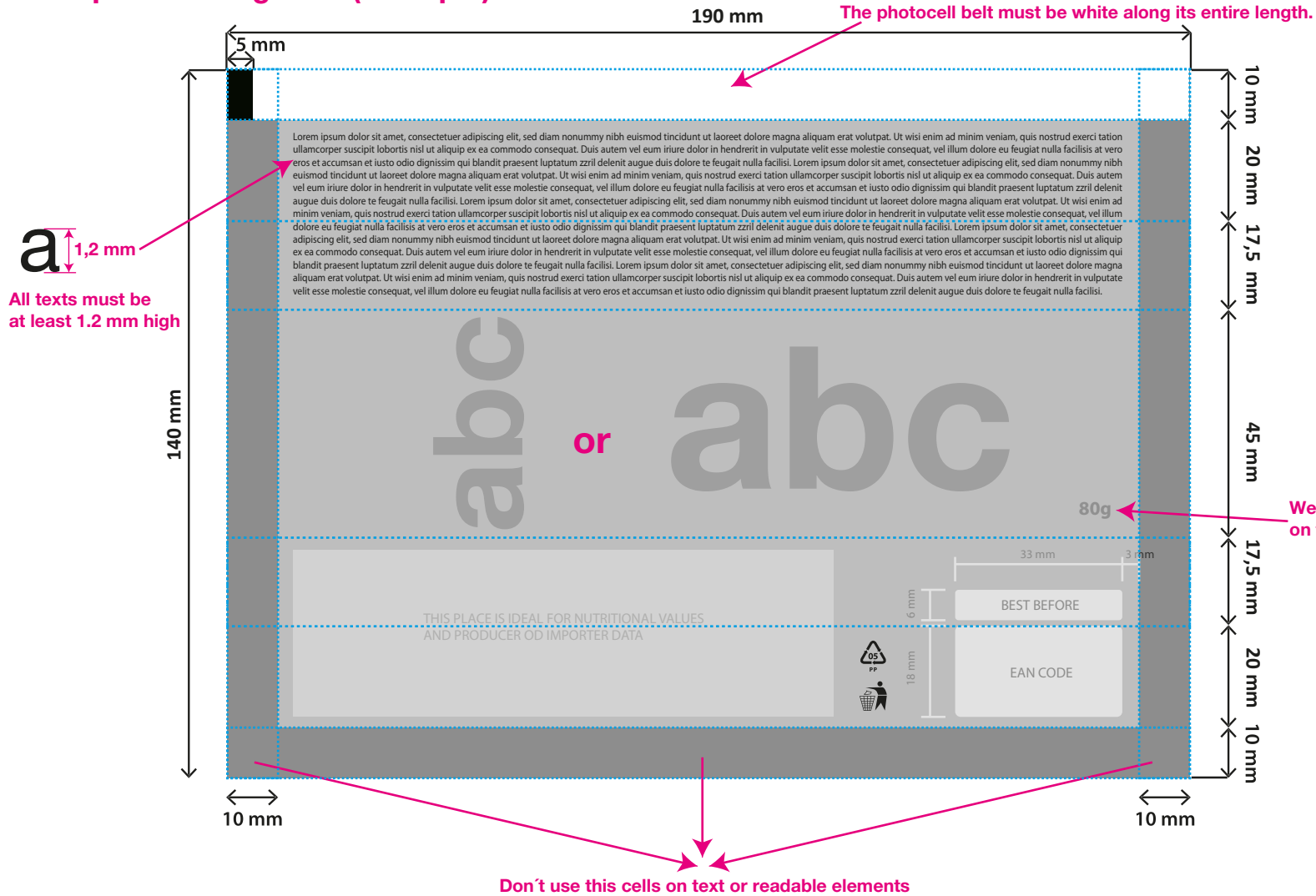
PROCESS:



* Standard conditions for Privat labels

** Express conditions for Privat labels

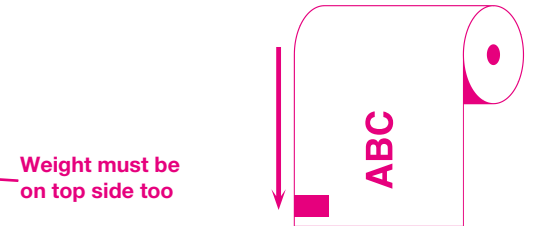
Foil guide for 80g bars (example):



a 1,2 mm

All texts must be at least 1.2 mm high

- Printing - flexoprint.
- Foil surface type - glossy or matt.
- The bottom layer can be metallic or white.
- Color, maybe 8 colors, we recommend underlining the graphics with white, which is not underlined with white will be metallic. We recommend a separate color of 100% for texts (eg CMYK = 0 0 0 100).



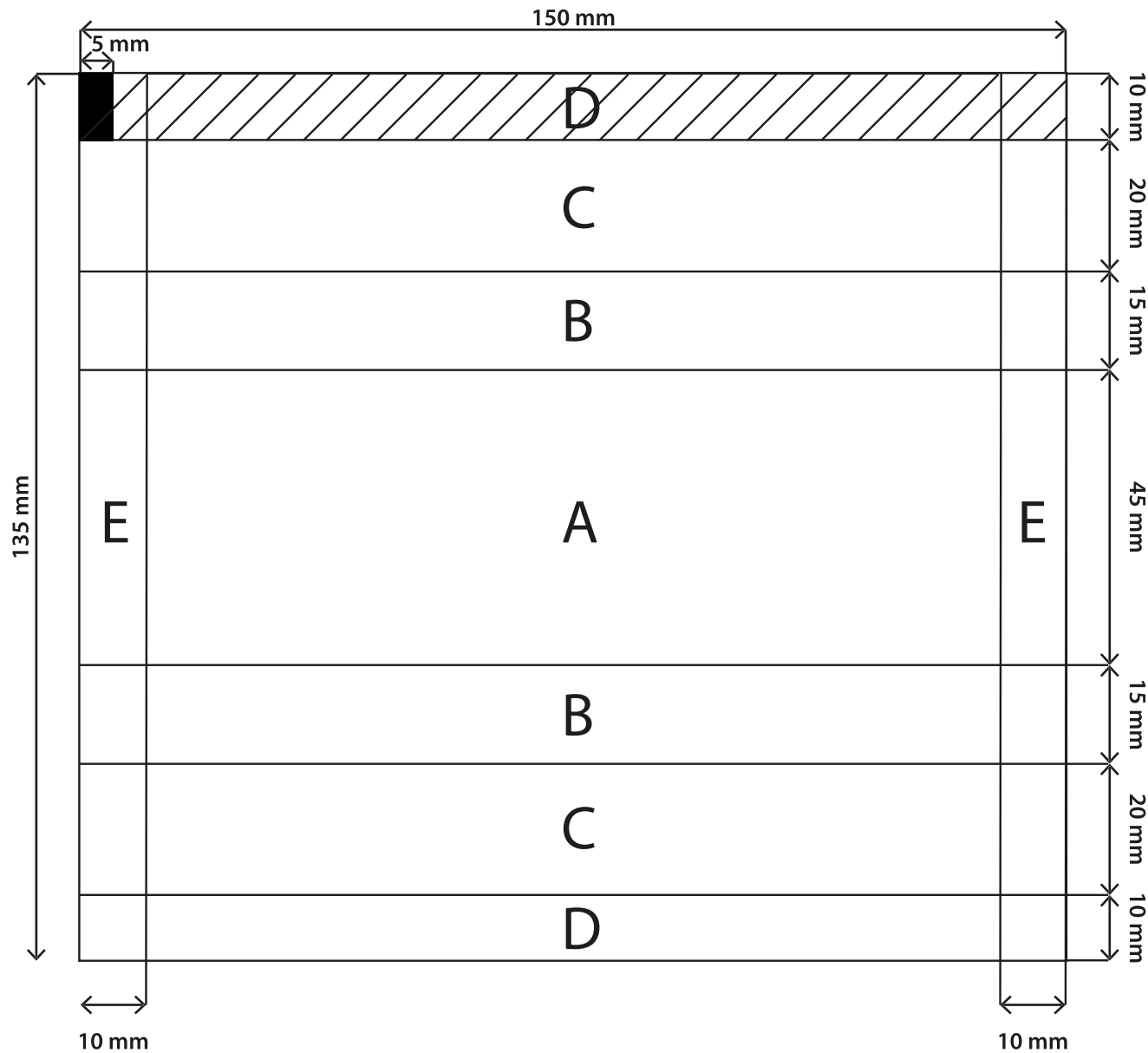
A layer creation pattern with a white background color that is simulated at 100% magenta.
 Magenta = white underlaid with graphics
 White = transparent metallic



foil width: 140 mm
 foil cutting length: 190 mm

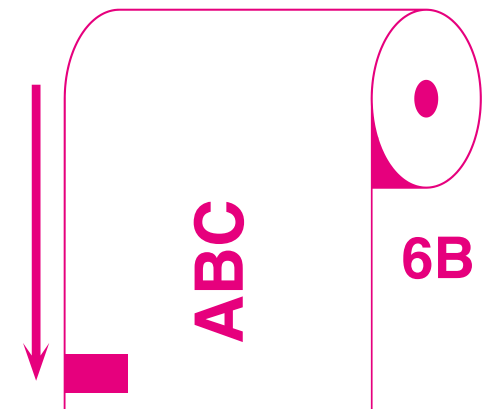
Possible size of the bar:
 base 40 mm, height 15 mm, depth 135 mm

code no.:
F001



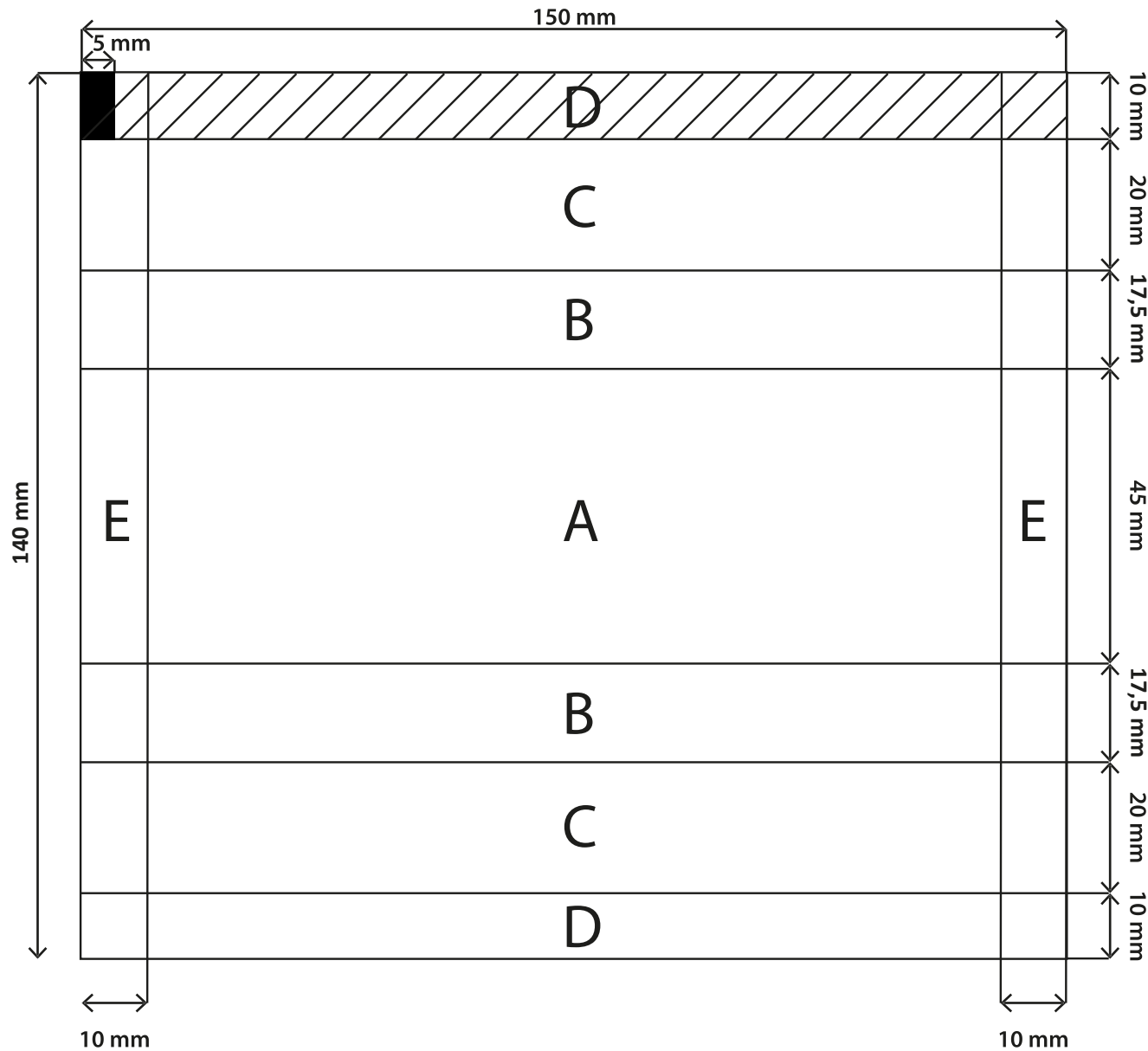
foil width: 135 mm
foil cutting length: 150 mm

- A - front side
- B - lateral sides
- C - back sides
- D - longitudinal welds
- E - transverse welds



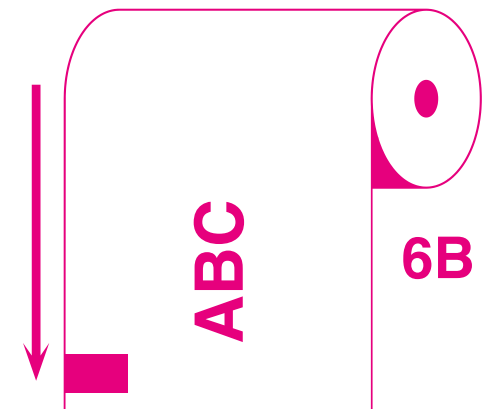
TECHNICAL DATA SHEET: STANDARD FOIL FOR 50g OR 55g BARS

code no.:
F002



foil width: 140 mm
foil cutting length: 150 mm

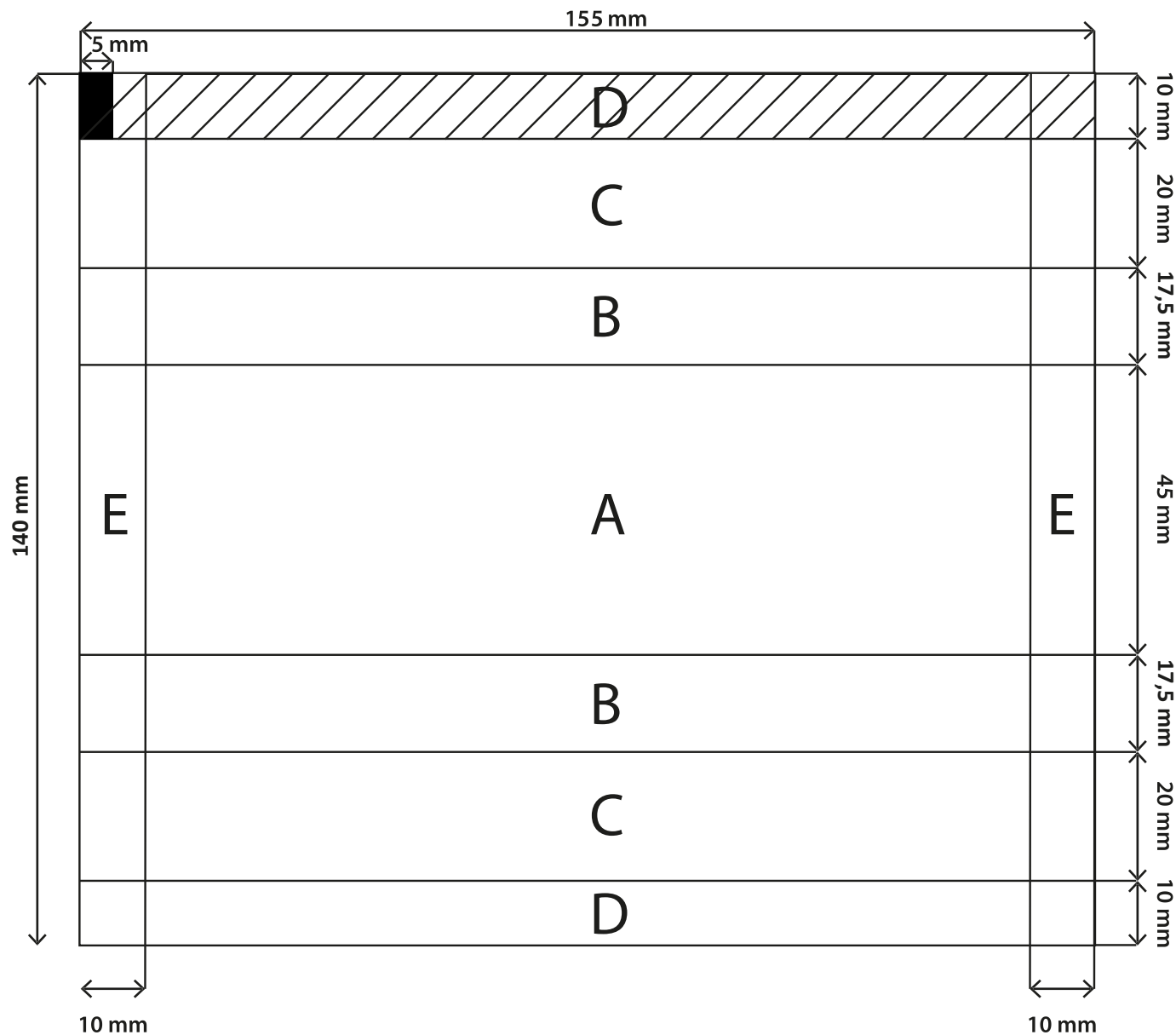
- A - front side
- B - lateral sides
- C - back sides
- D - longitudinal welds
- E - transverse welds



TECHNICAL DATA SHEET: STANDARD FOIL FOR 40g (WIDE BARS - NUTS), 50g OR 55g BARS

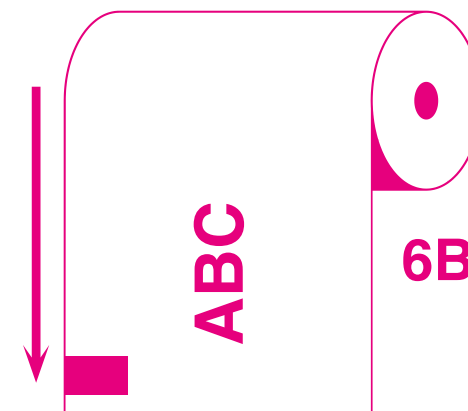
code no.:

F003



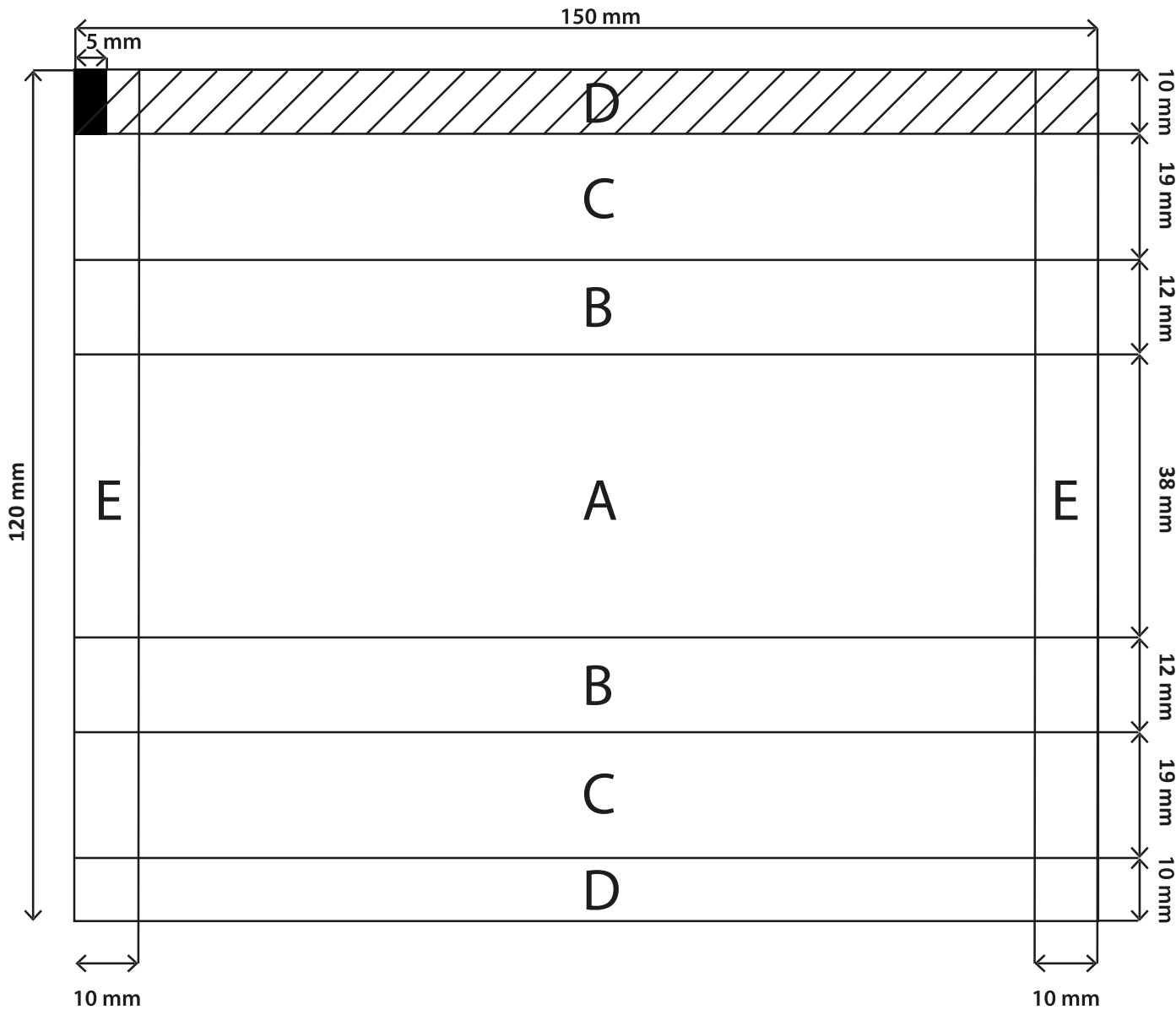
foil width: 140 mm
foil cutting length: 155 mm

- A - front side
- B - lateral sides
- C - back sides
- D - longitudinal welds
- E - transverde welds



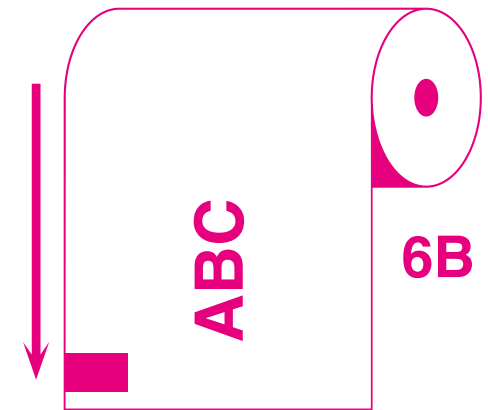
TECHNICAL DATA SHEET: STANDARD FOIL FOR BARS 60g (WIDE BARS)

code no.:
F004



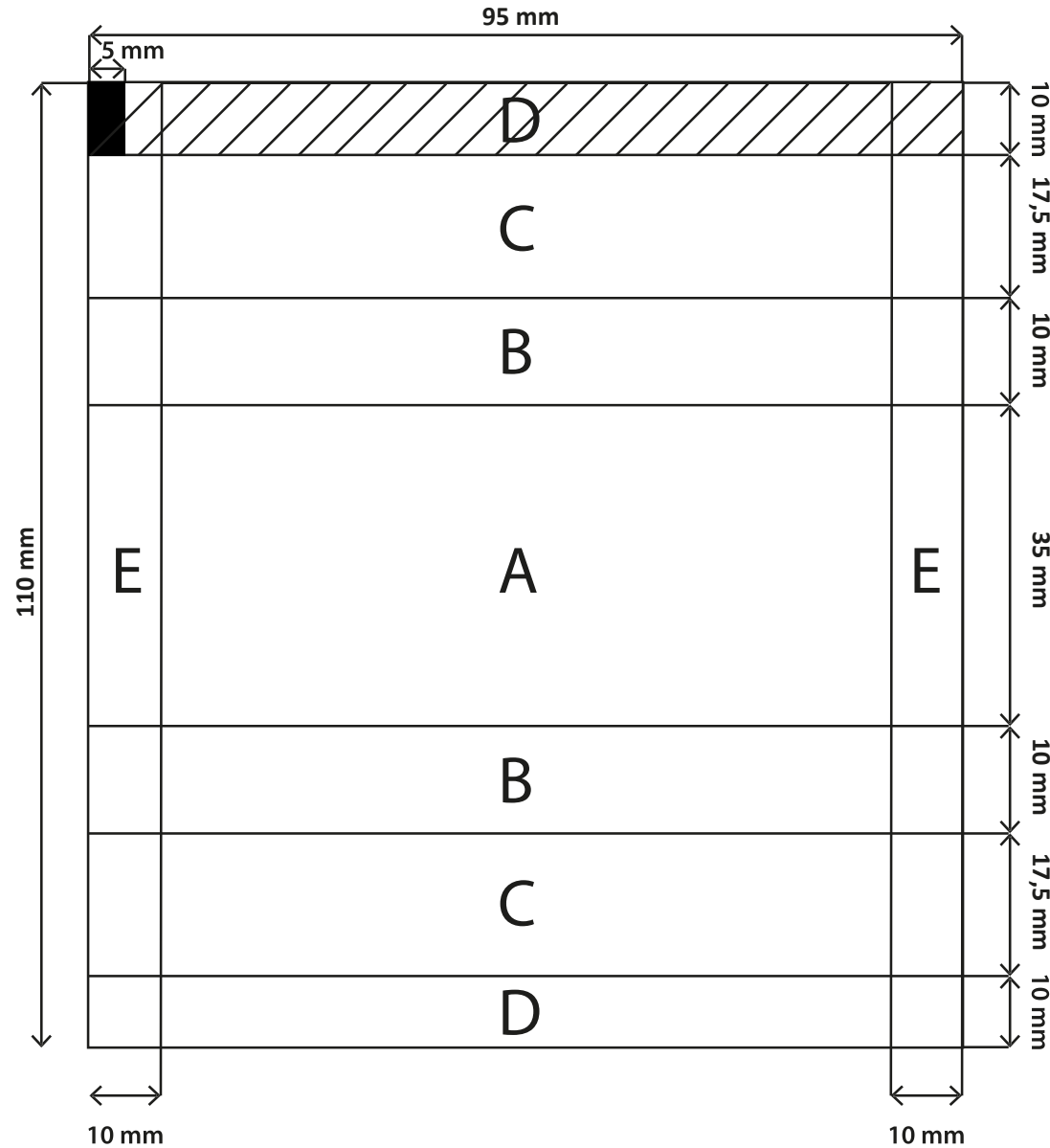
foil width: 120 mm
foil cutting length: 150 mm

- A - front side
- B - lateral sides
- C - back sides
- D - longitudinal welds
- E - transverse welds



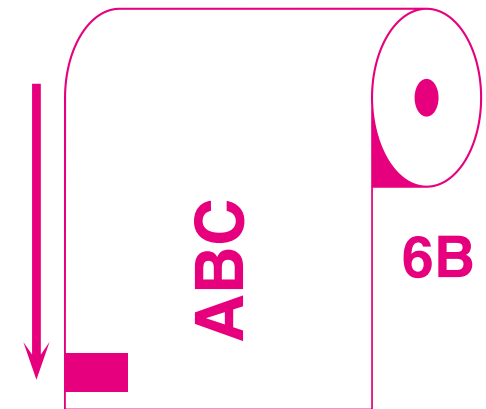
TECHNICAL DATA SHEET: STANDARD FOIL FOR BARS 30g, 35g OR 40g (NARROW BARS)

code no.:
F005

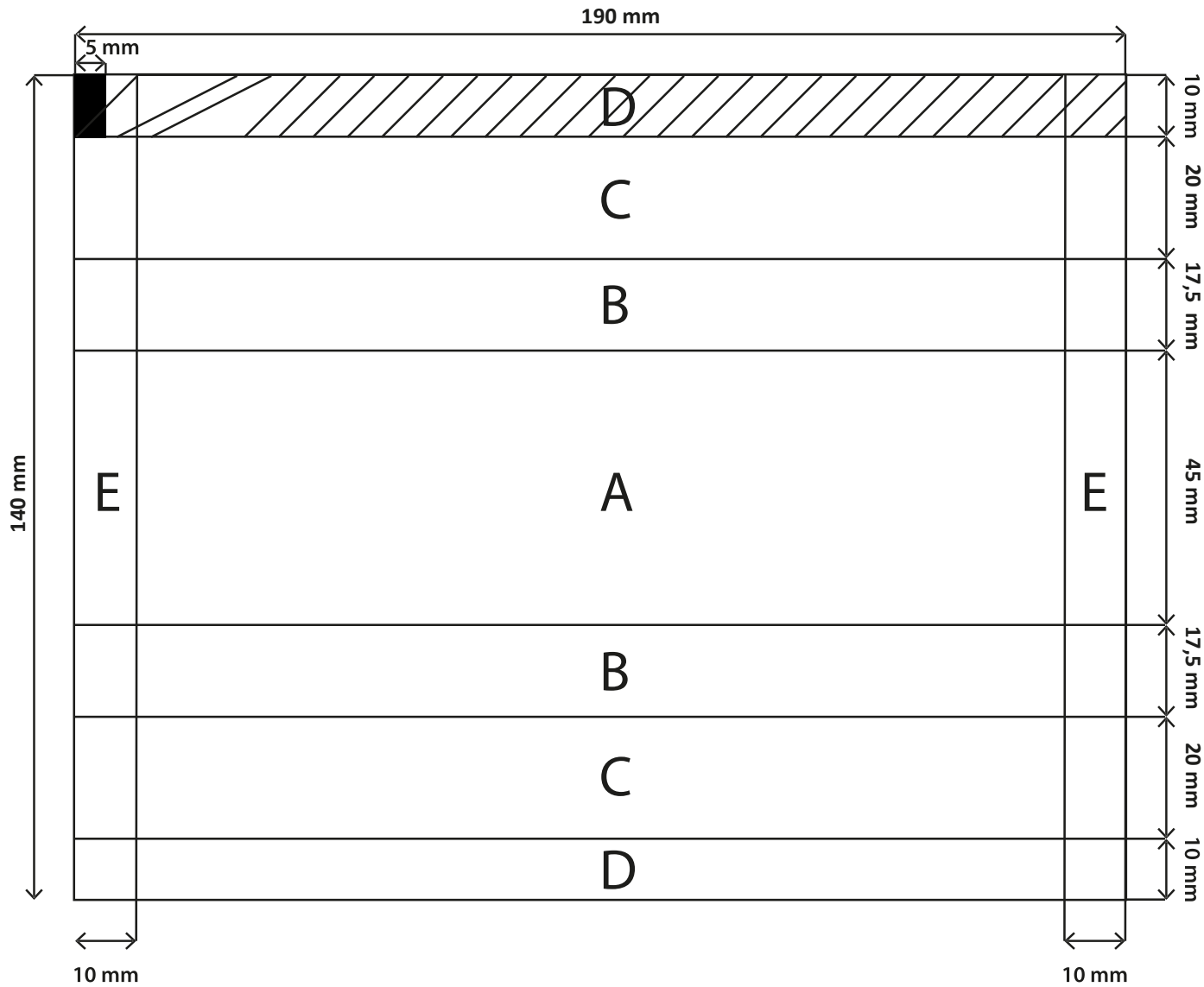


foil width: 110 mm
foil cutting length: 95 mm

- A - front side
- B - lateral sides
- C - back sides
- D - longitudinal welds
- E - transverse welds

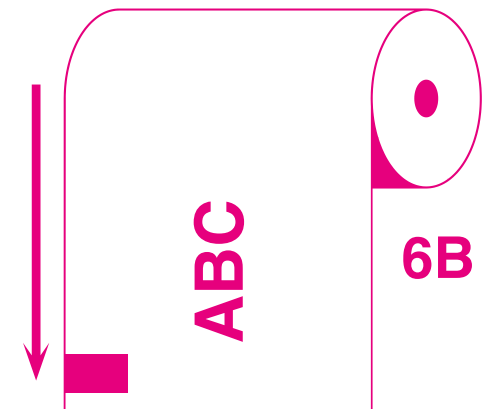


code no.:
F006

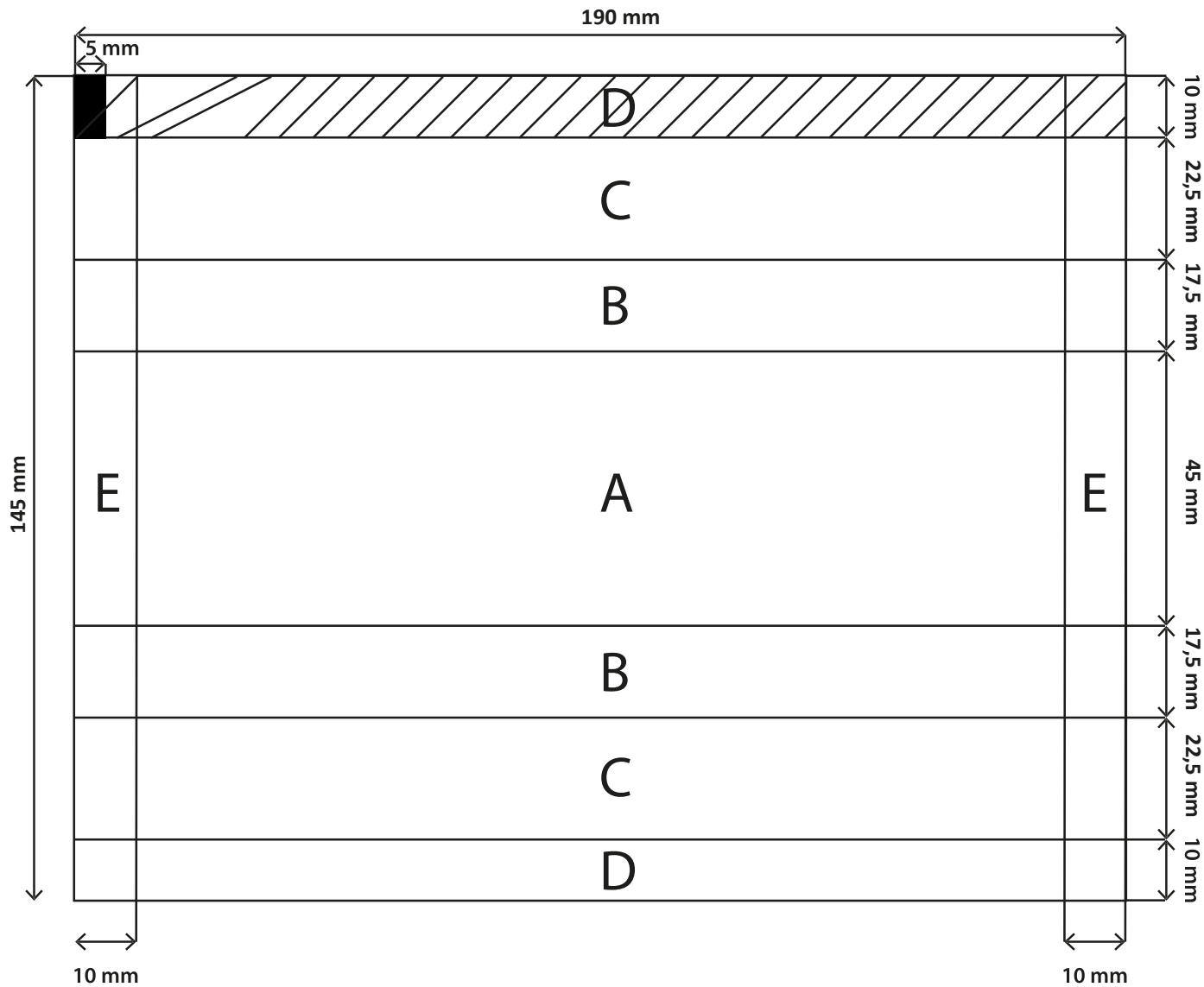


foil width: 140 mm
foil cutting length: 190 mm

- A - front side
- B - lateral sides
- C - back sides
- D - longitudinal welds
- E - transverse welds

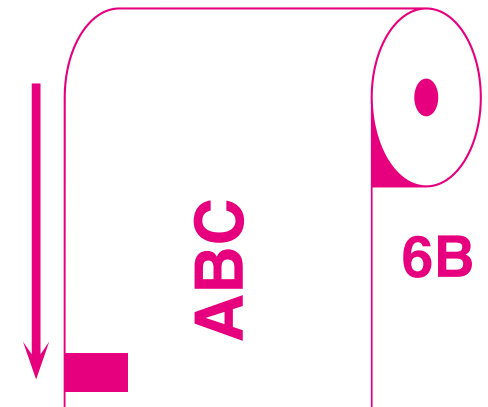


code no.:
F007

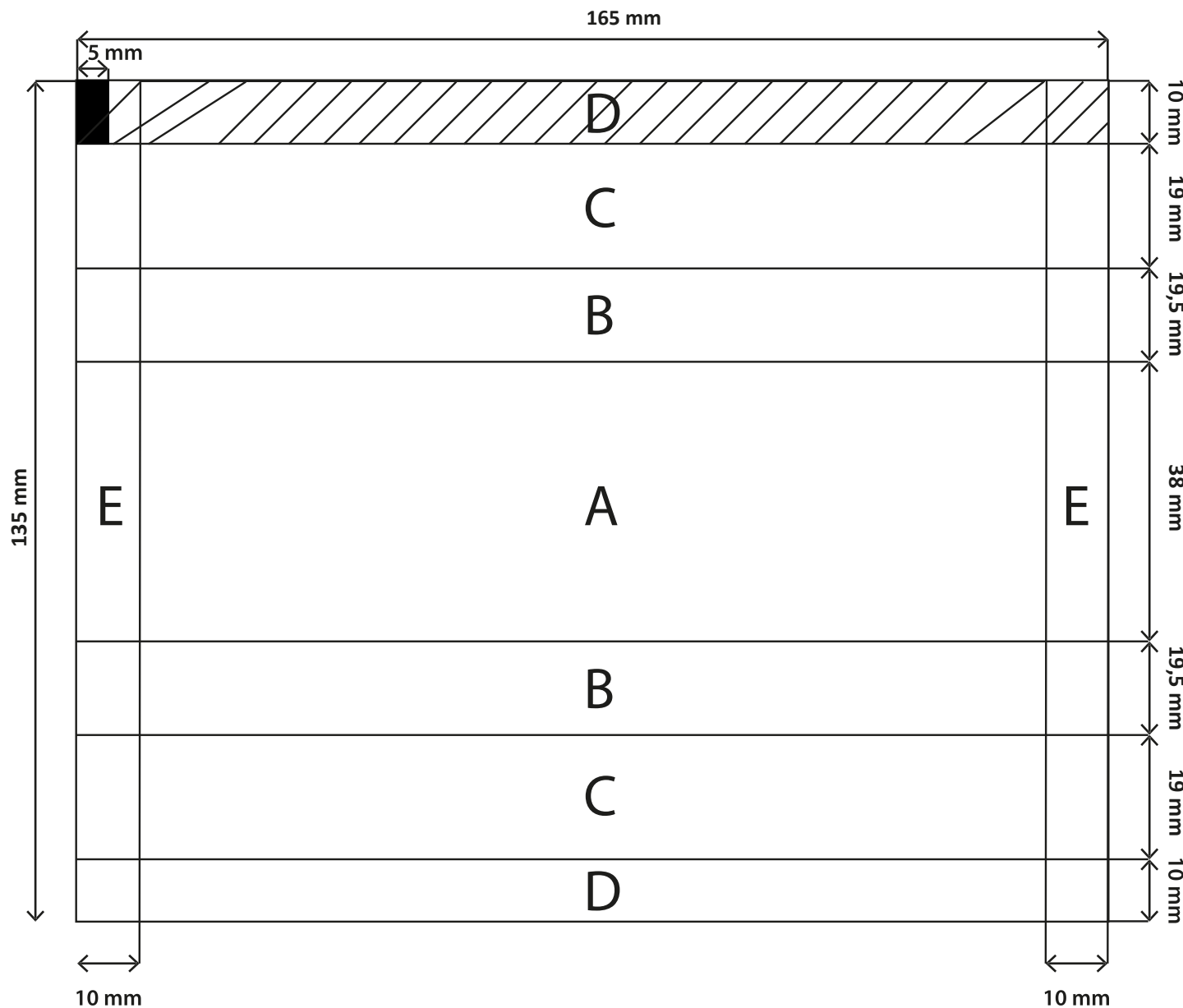


foil width: 145 mm
foil cutting length: 190 mm

- A - front side
- B - lateral sides
- C - back sides
- D - longitudinal welds
- E - transverse welds

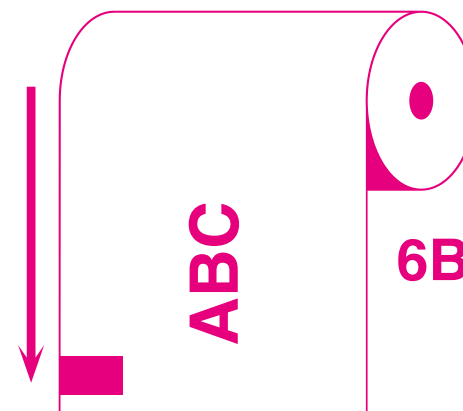


F008



foil width: 135 mm
foil cutting length: 165 mm

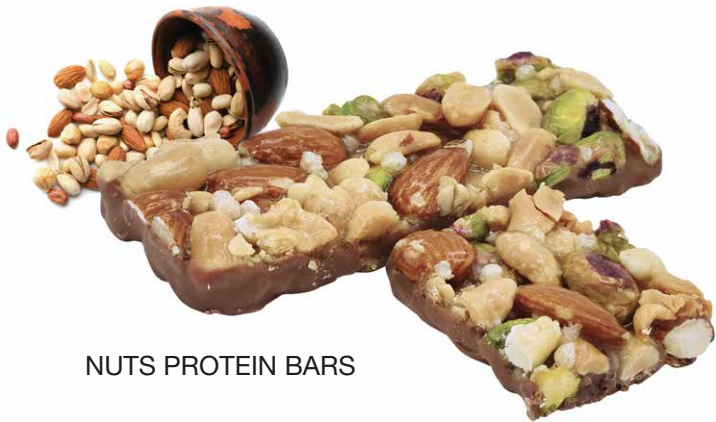
- A - front side
- B - lateral sides
- C - back sides
- D - longitudinal welds
- E - transverse welds



TECHNICAL DATA SHEET: STANDARD FOIL FOR BARS 60g (NARROW BARS)

DIFFERENCE BETWEEN:

40g WIDE BARS



NUTS PROTEIN BARS

40g NARROW BARS



COLLAGEN PROTEIN BARS



CHICORY ROOT FIBER PROTEIN BARS



DOUBLE CARAMEL PROTEIN BARS



VEGAN PROTEIN BARS



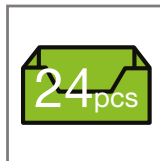
RAW PROTEIN BARS

FLEXO PRINTING DIRECTLY ON CARDBOARD:

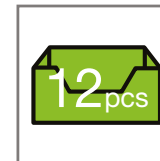
- PRINTING ONLY AS SOLID COLOR (PANTONE)
- NOT SUITABLE FOR FULL COLOR IMAGES (BITMAPS)
- IDEAL FOR VECTOR GRAPHICS



MOQs display box of one kind: from 4 000 pcs
(prepayment)



Number of pieces per classic display box:
24 pcs (40-60g), 30 pcs (30-40g)



Number of pieces per half display box:
12 pcs (30-60g)



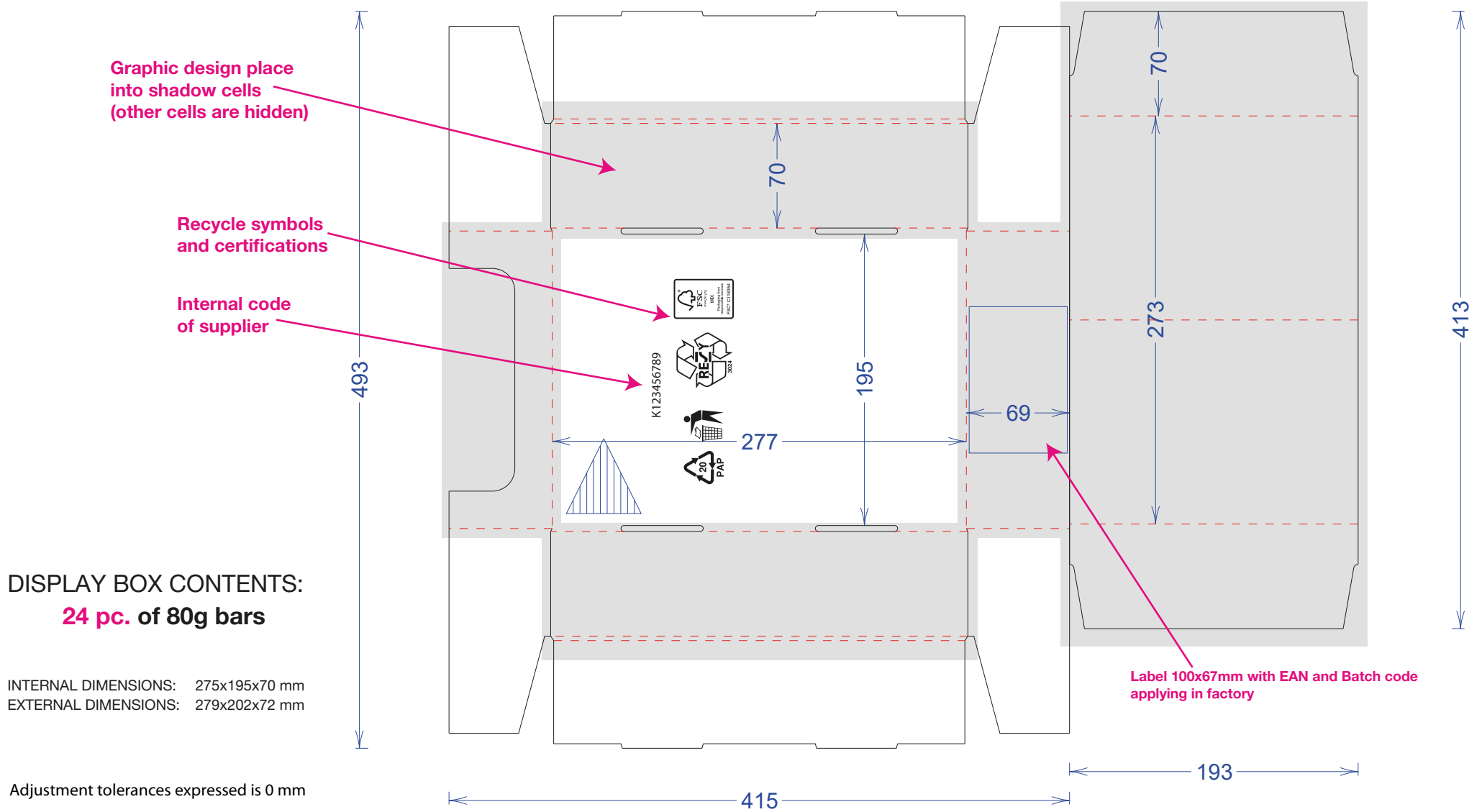
Production lead time:
(order - pick up): 6-8 weeks

CARTON BOX GUIDE (EXAMPLE FOR 80G BARS)

FLEXO PRINTING DIRECTLY ON CARDBOARD:

- PRINTING ONLY AS SOLID COLOR (PANTONE) - 3 COLOURS + FULLY OR PARTIALLY GLOSSY POLISH
- NOT SUITABLE FOR FULL COLOR IMAGES (BITMAPS)
- IDEAL FOR VECTOR GRAPHICS

WITH REMOVABLE AND FOLDABLE LID FOR XXL BARS



code no.:
CF001

WITH DISPLAY FOR CLASSIC AND MINI BARS

DISPLAY BOX CONTENTS:

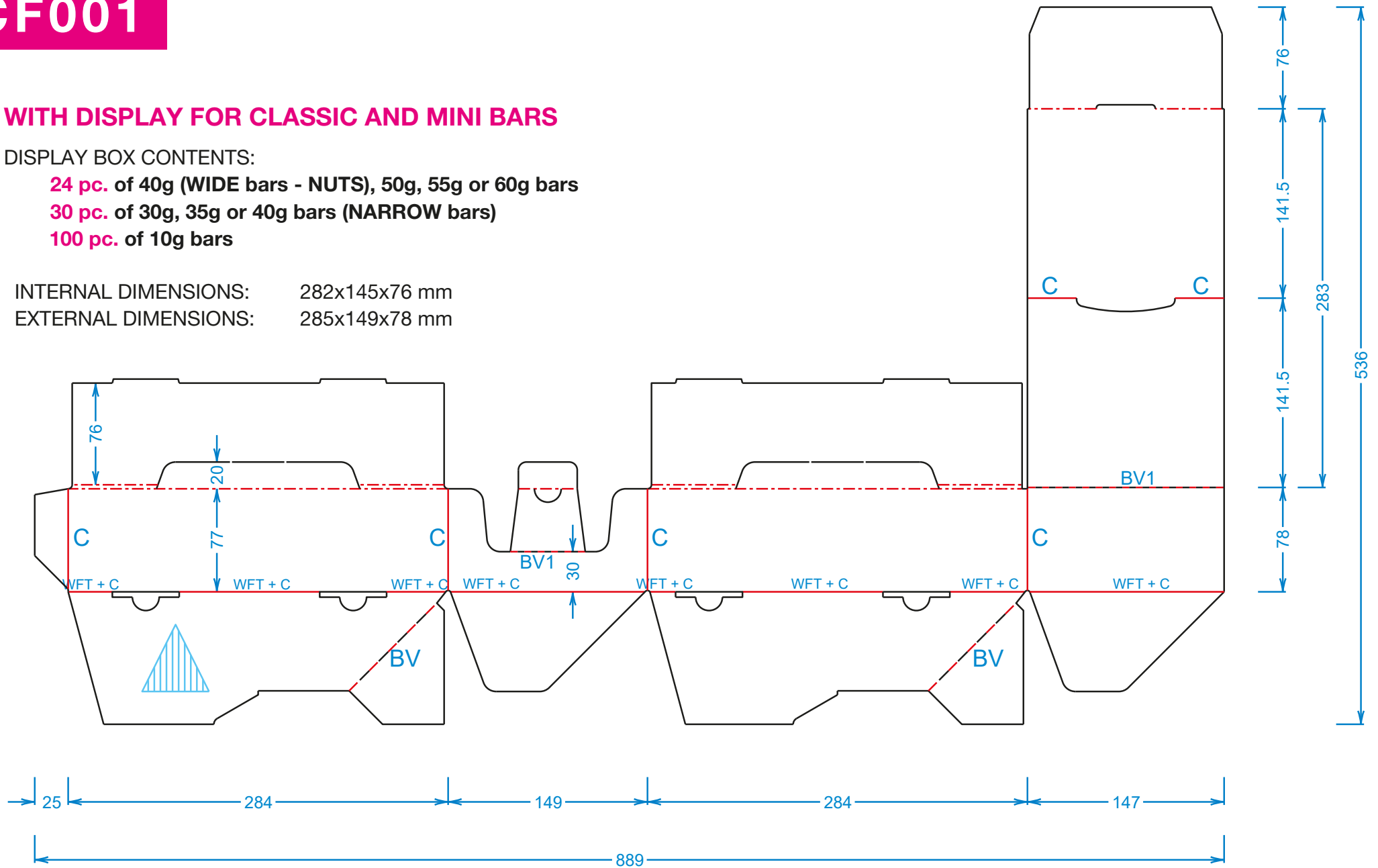
24 pc. of 40g (WIDE bars - NUTS), 50g, 55g or 60g bars

30 pc. of 30g, 35g or 40g bars (NARROW bars)

100 pc. of 10g bars

INTERNAL DIMENSIONS: 282x145x76 mm

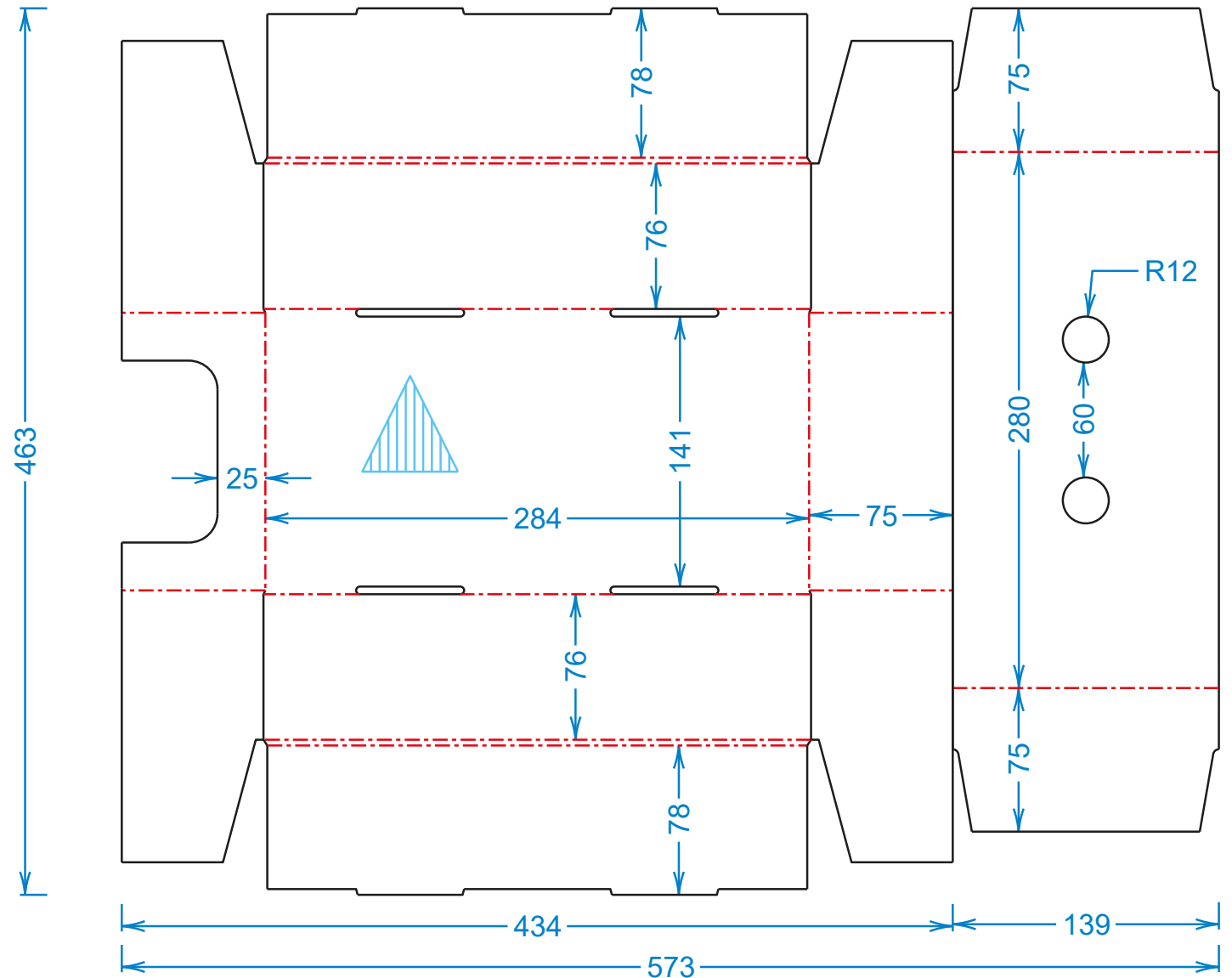
EXTERNAL DIMENSIONS: 285x149x78 mm



code no.:
CF002

**WITH REMOVABLE LID
FOR CLASSIC
AND MINI BARS**

INTERNAL DIMENSIONS: 282x141x76 mm
EXTERNAL DIMENSIONS: 287x150x78 mm



DISPLAY BOX CONTENTS:

24 pc. of 40g (**WIDE** bars - NUTS), 50g, 55g or 60g bars

30 pc. of 30g, 35g or 40g bars (**NARROW** bars)

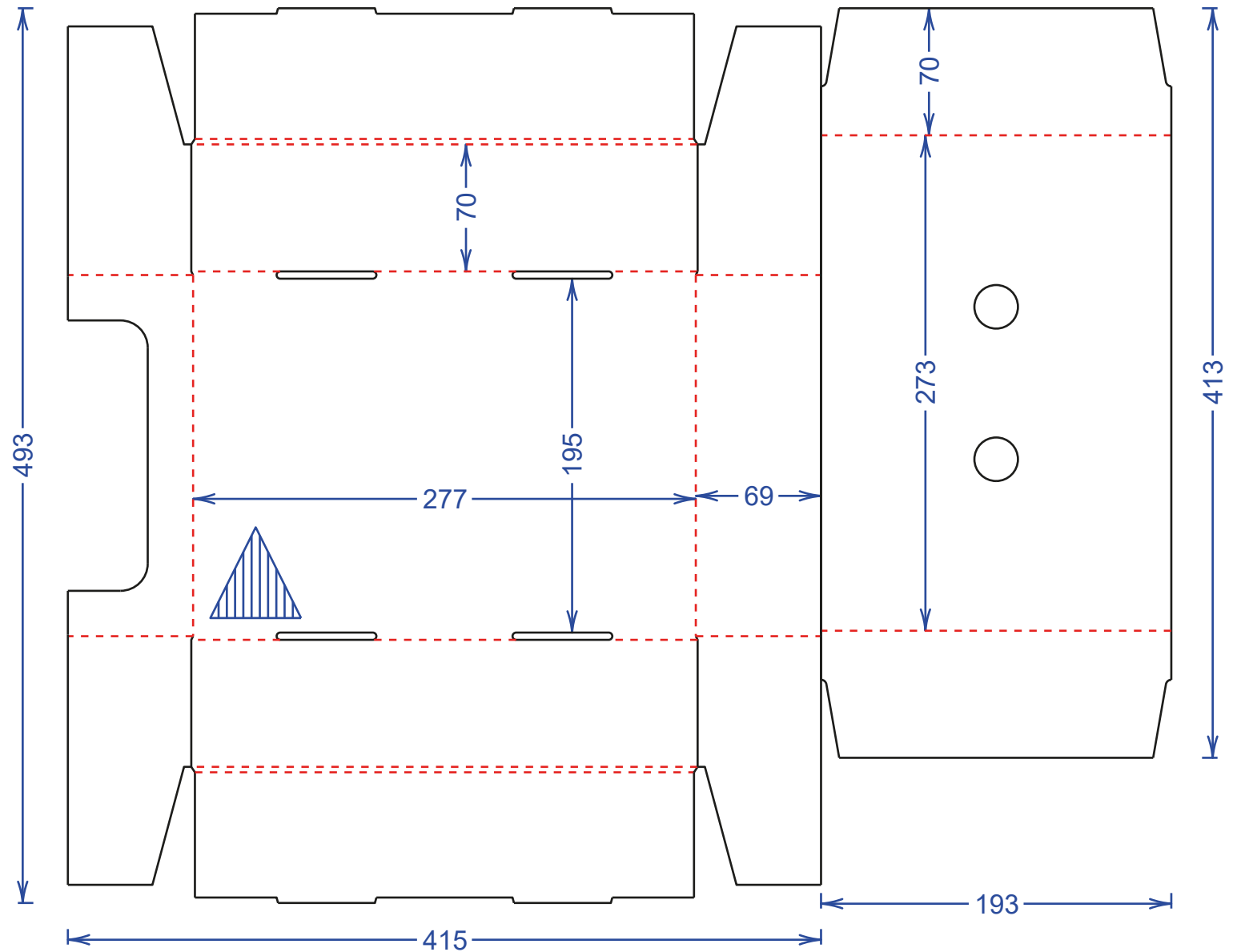
100 pc. of 10g bars

code no.:
CF003

**WITH REMOVABLE LID
FOR XXL BARS**

INTERNAL DIMENSIONS: 275x195x70 mm
EXTERNAL DIMENSIONS: 279x202x72 mm

DISPLAY BOX CONTENTS:
24 pc. of 80g bars

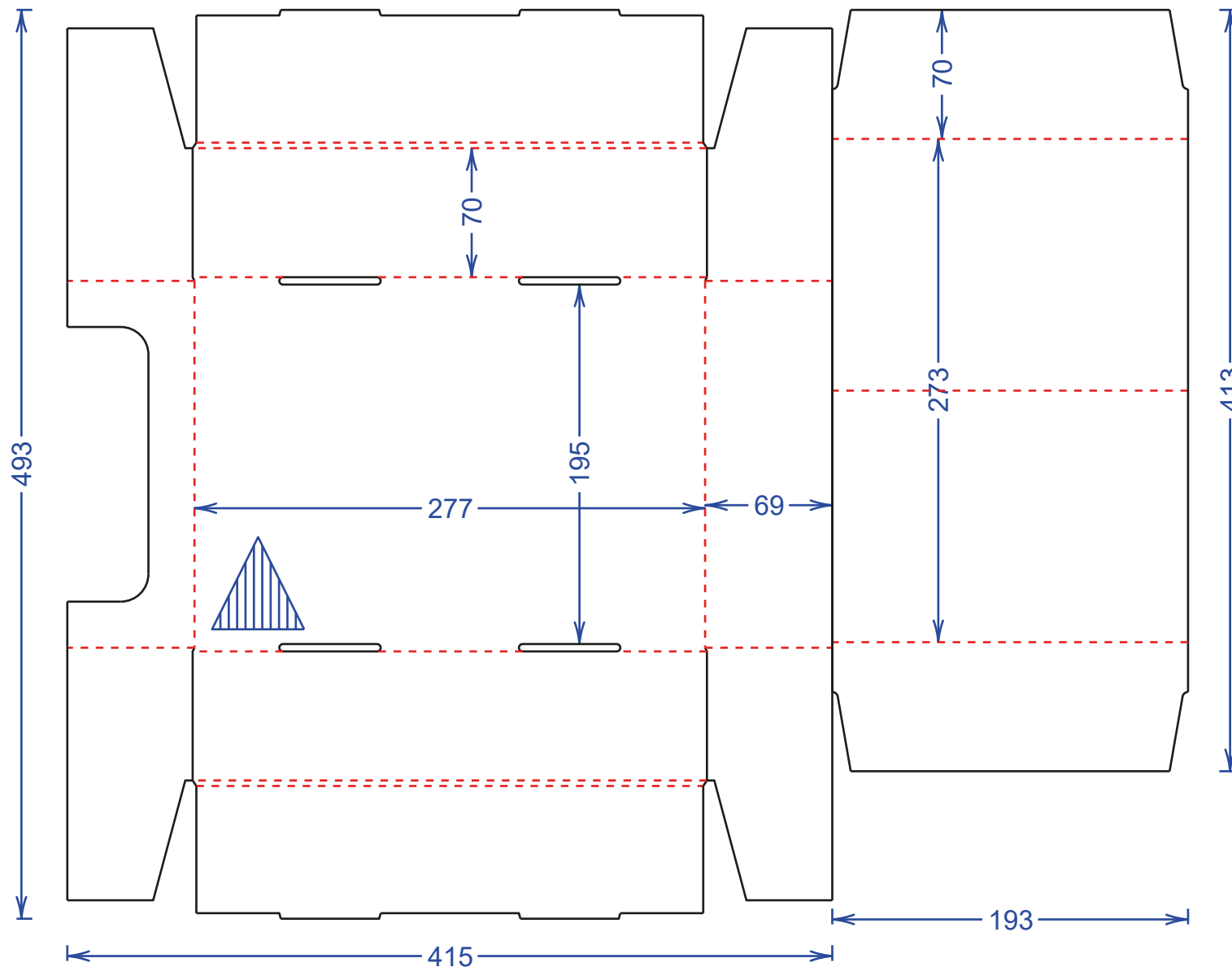


code no.:
CF003B

**WITH REMOVABLE LID
FOR XXL BARS**

INTERNAL DIMENSIONS: 275x195x70 mm
EXTERNAL DIMENSIONS: 279x202x72 mm

DISPLAY BOX CONTENTS:
24 pc. of 80g bars



code no.:

CF004

HALF BOX WITH DISPLAY FOR CLASSIC AND MINI BARS

INTERNAL DIMENSIONS: 141x147x75 mm

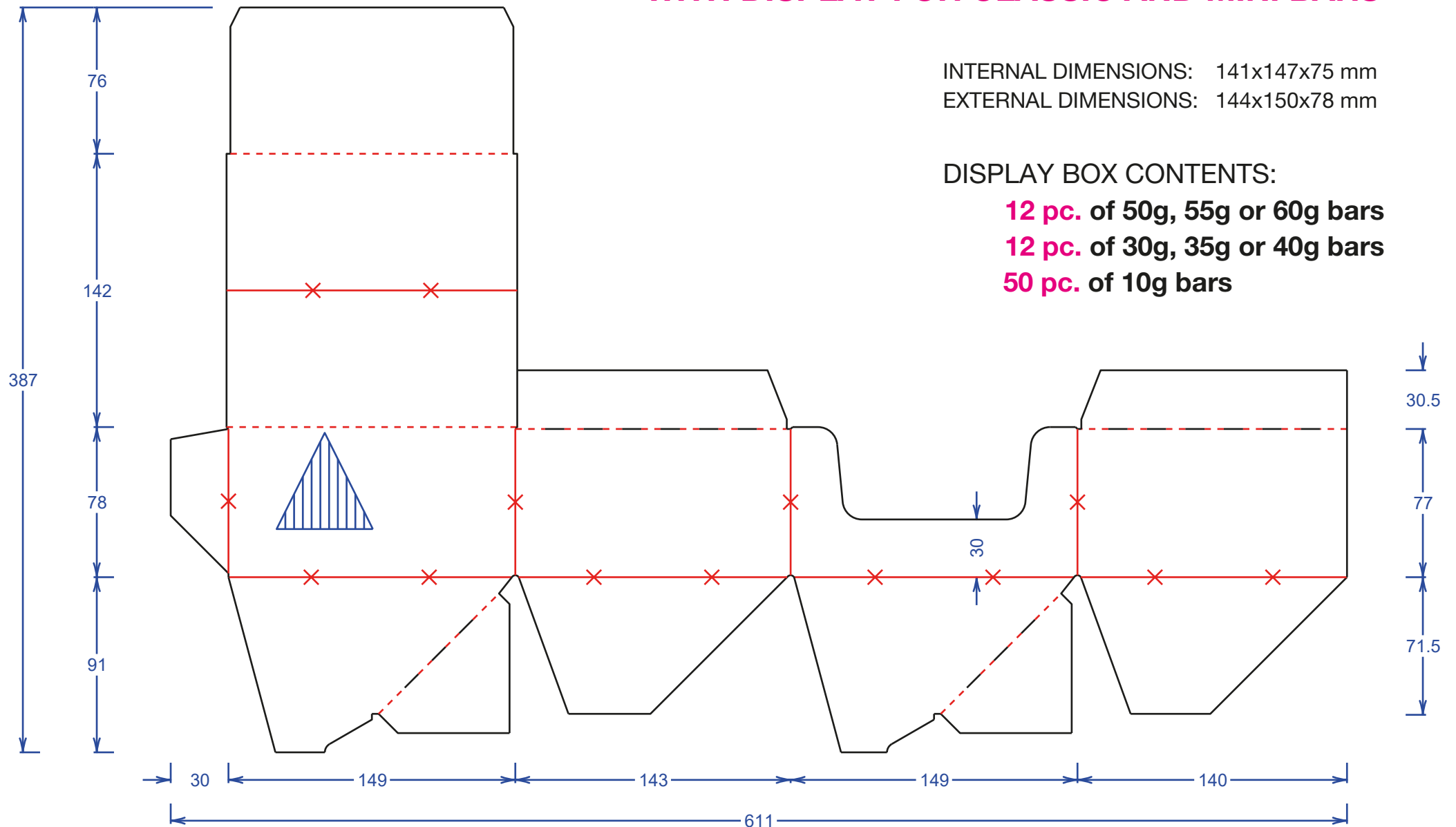
EXTERNAL DIMENSIONS: 144x150x78 mm

DISPLAY BOX CONTENTS:

12 pc. of 50g, 55g or 60g bars

12 pc. of 30g, 35g or 40g bars

50 pc. of 10g bars



OFFSET PRINTING LAMINATED ON CARDBOARD:

- IDEAL FOR FULL COLOR IMAGES (BITMAPS)

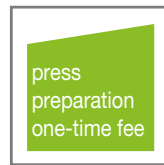
- IDEAL FOR CMYK



MOQs display box of one kind: 12 000 pcs

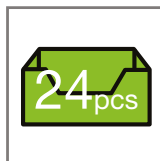
(prepayment)

- can combine 3 types x 4000 pcs or 2 types x 6000 pcs



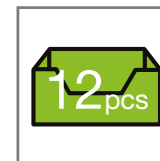
CMYK: 600 €/type

more plus colours: on request



Number of pieces per classic display box:

24 pcs (40-55g), 30 pcs (30-40g)



Number of pieces per half display box:

12 pcs (30-40g)



Production lead time:

(order - pick up): 6-8 weeks

code no.:
C0001

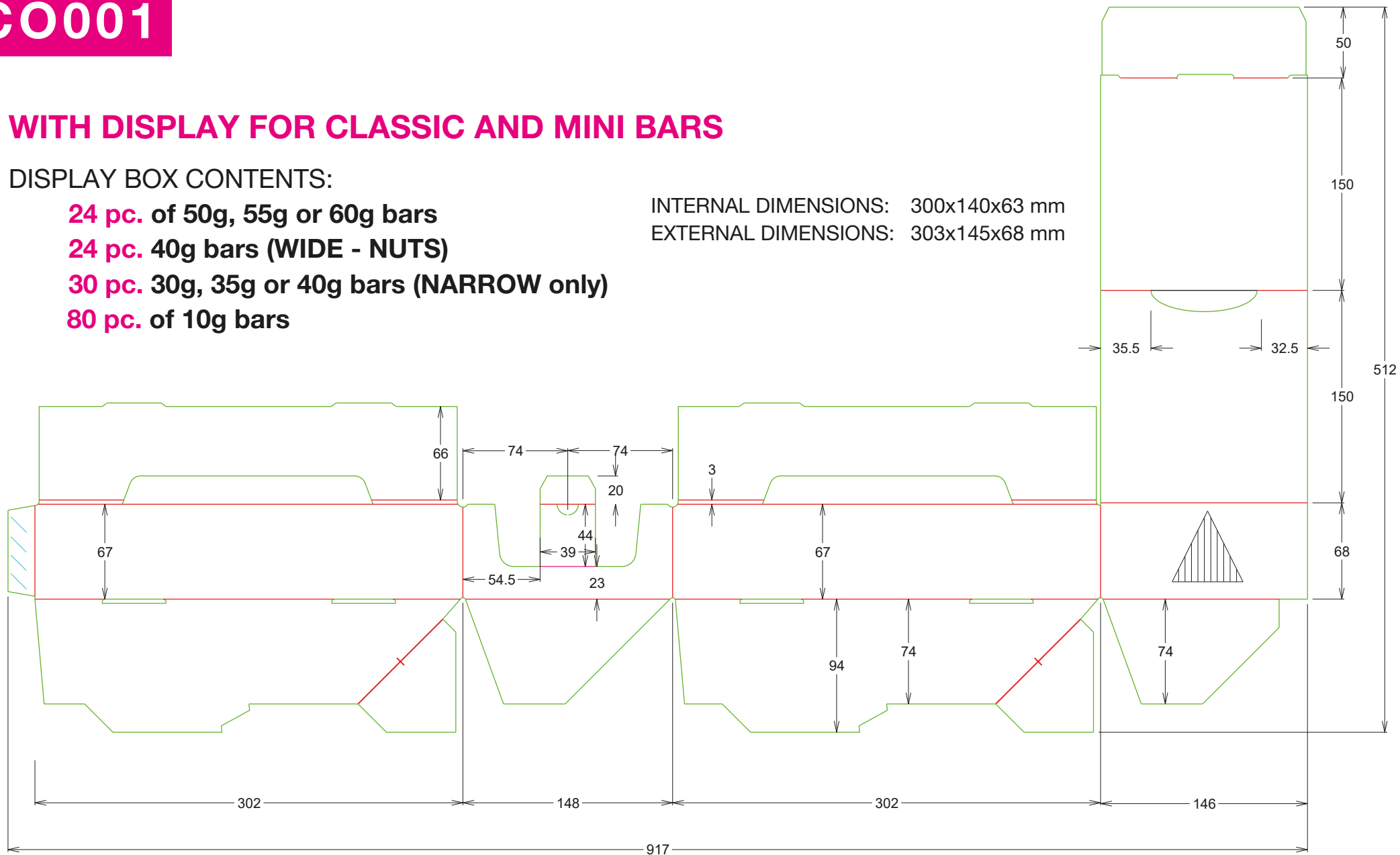
WITH DISPLAY FOR CLASSIC AND MINI BARS

DISPLAY BOX CONTENTS:

- 24 pc.** of 50g, 55g or 60g bars
- 24 pc.** 40g bars (WIDE - NUTS)
- 30 pc.** 30g, 35g or 40g bars (NARROW only)
- 80 pc.** of 10g bars

INTERNAL DIMENSIONS: 300x140x63 mm

EXTERNAL DIMENSIONS: 303x145x68 mm



HALF BOX WITH DISPLAY FOR CLASSIC AND MINI BARS

DISPLAY BOX CONTENTS:

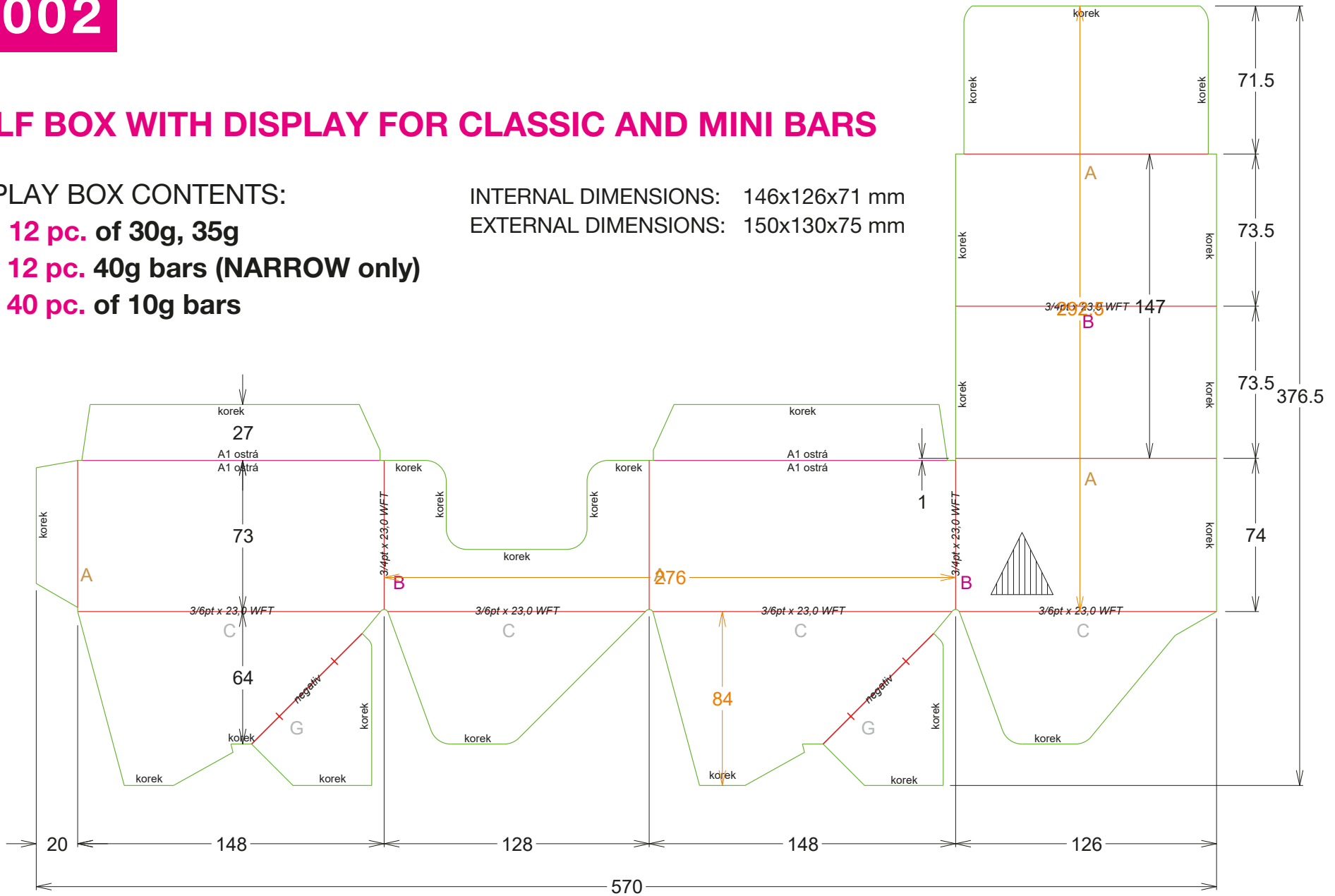
12 pc. of 30g, 35g

12 pc. 40g bars (NARROW only)

40 pc. of 10g bars

INTERNAL DIMENSIONS: 146x126x71 mm

EXTERNAL DIMENSIONS: 150x130x75 mm





BECOME OUR CLIENT



Healthy Food Supplements

Kolónia 2834/49
924 01 Galanta, Slovakia

www.hfs-slovakia.com